

SOUTHERN CRESCENT

IN THE GALISTEO BASIN PRESERVE



The Southern Crescent conservation neighborhood is located in the spectacular Galisteo Basin Preserve just south of Santa Fe, New Mexico. Its 22 home sites embrace an 86-tree orchard and community garden area and offer immediate access to an extensive network of hiking, biking, and equestrian trails in the Preserve's planned 13,000 acres of protected open space.

Panoramic views of the southern Galisteo Basin and the Ortiz Mts. characterize the beauty of Southern Crescent; arroyos, native grasses, piñon, and juniper provide abundant wildlife habitat. The 3- to 9-acre home sites are arranged on gentle south- and west-facing slopes of a crescent-shaped ridge, each carefully sited to preserve the region's visual, natural, and cultural resources.

Each lot's building envelope can accommodate a single-family home, studio, and garden. Home sites are serviced by roads and utilities:

- Electricity
- Community water system

As members of the Galisteo Basin Preserve, Southern Crescent residents are an important part of a visionary land preservation initiative and a dynamic stewardship community.

Located in north-central New Mexico, the Galisteo Basin Preserve is framed by the Cerrillos Hills and Ortiz, Sangre de Cristo, and Jemez mountains. The entrance to the Galisteo Basin Preserve and Southern Crescent is 13 miles south of Santa Fe via US Hwy 285. You will pass Eldorado, crest the Lamy Hill, and cross a set of railroad tracks. Turn right just past mile marker No. 285 onto Astral Valley Road and follow signs to Southern Crescent.



SantaFeProperties.com
SouthernCrescent.com
GalisteoBasinPreserve.com

Call one of our brokers for more information:

Don DeVito
505.690.1866

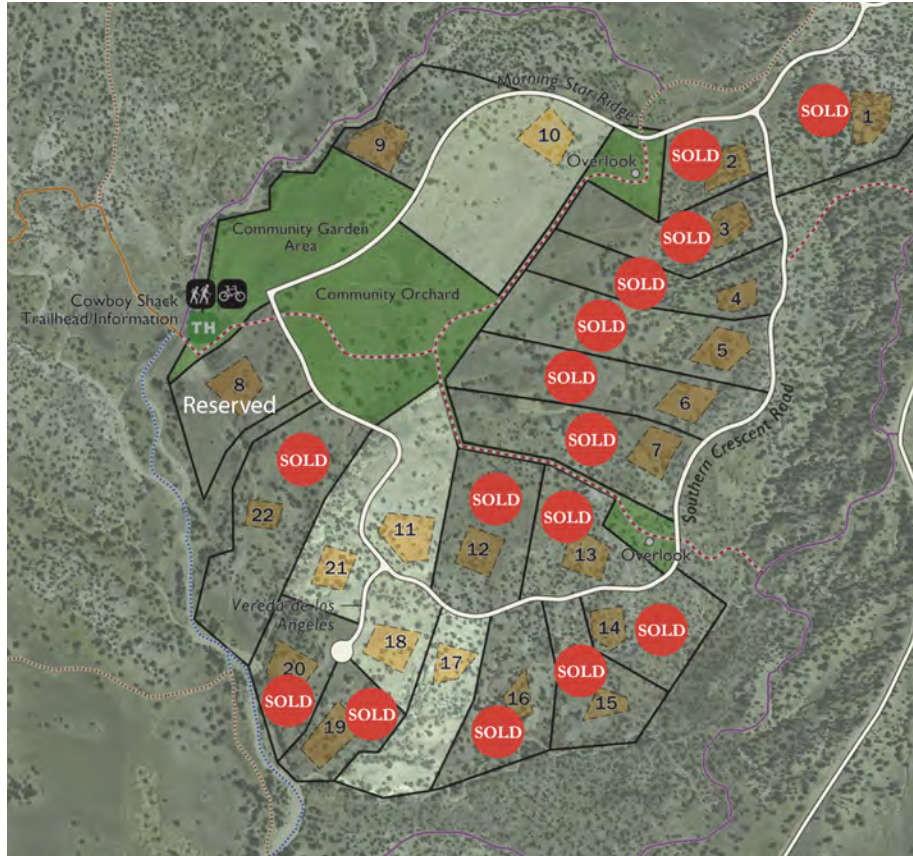
Matt Desmond
505.670.1289

Leslie Gallatin-Giorgetti
505.670.7578

Southern Crescent is a neighborhood development of **CommonwealCommunities**

SOUTHERN CRESCENT

IN THE GALISTEO BASIN PRESERVE



Southern Crescent
Galisteo Basin Preserve, New Mexico

Aerial Photo

Base Layers

- Lot lines
- Building Envelope
- Roads

Trails Legend

- TH Trailhead
- H Hiking Trail Access
- B Biking Trail Access
- Hiking / Biking Native Trail
- Planned Trails
- Equestrian Trail
- Arroyo Equestrian Trail
- Private Neighborhood Trail

Available Southern Crescent Home Sites

LOT	DESCRIPTION	ACREAGE	PRICE
21	.63 Southern Crescent	3.93	\$159,500
18	.59 Southern Crescent	2.78	\$195,500
17	.55 Southern Crescent	4.30	\$203,500
11	.11 Southern Crescent	4.35	\$229,500
10	.27 Morning Star Ridge	8.80	\$289,000



SantaFeProperties.com
SouthernCrescent.com
GalisteoBasinPreserve.com



All information contained herein is believed to be correct. However, neither agents nor owners warrant the accuracy. This offering is made subject to errors, omissions, change of price, prior sale or withdrawal from market without notice in accordance with the law. This property is offered for sale without respect to race, color, creed, or national origin.